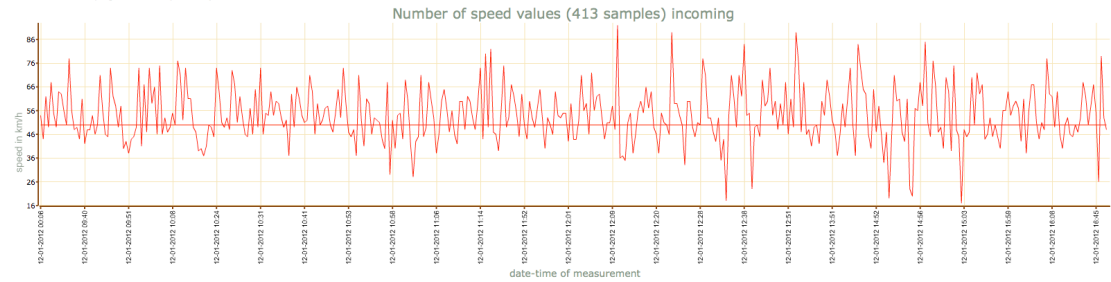


- Speed values
- Vehicle count
- Average & maximum
- Speed percentiles
- Frequency evaluation
- Histogram
- Classification
- Export to Excel
- Setup & admin

This chart shows the speed values in time interval

Number of speed values

This is a Demo page of InfoSpeed System.



Start of evaluation: , End of evaluation:

speed limit: km/h

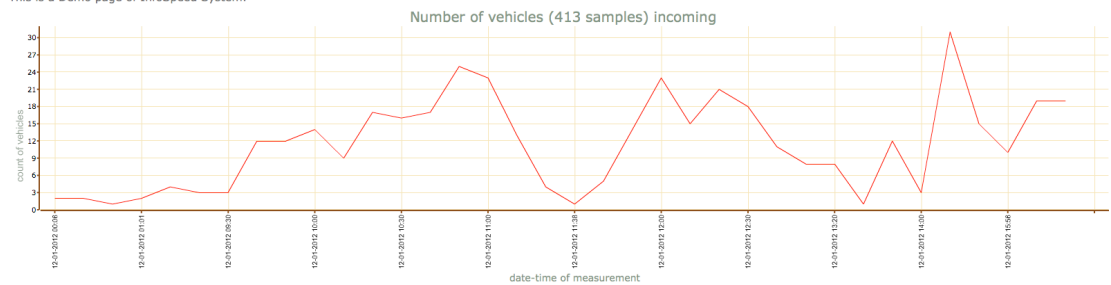
Total samples: 16-12-2010 22:27 - 18-01-2012 19:23, 11503

- Speed values
- Vehicle count
- Average & maximum
- Speed percentiles
- Frequency evaluation
- Histogram
- Classification
- Export to Excel
- Setup & admin

The chart shows the number of vehicles in time interval

Number of vehicles

This is a Demo page of InfoSpeed System.



Start of evaluation: , End of evaluation:

time interval: minutes

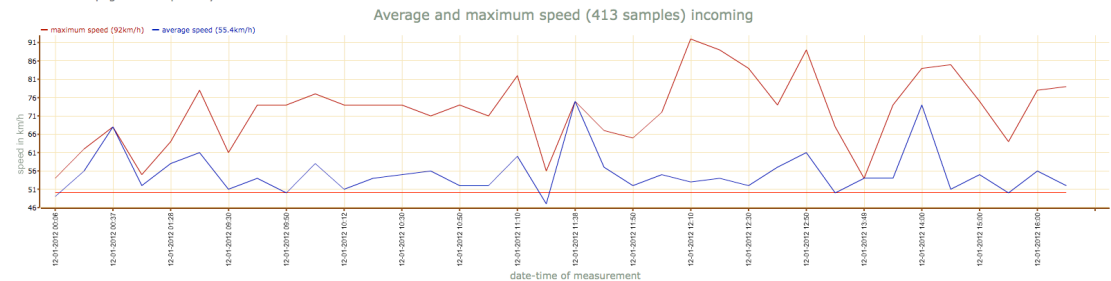
Total samples: 16-12-2010 22:27 - 18-01-2012 19:23, 11503

- Speed values
- Vehicle count
- Average & maximum
- Speed percentiles
- Frequency evaluation
- Histogram
- Classification
- Export to Excel
- Setup & admin

The chart shows the average and maximum speed value in time interval

Average and maximum speed

This is a Demo page of InfoSpeed System.



Start of evaluation: , End of evaluation:

time interval: minutes speed limit: km/h

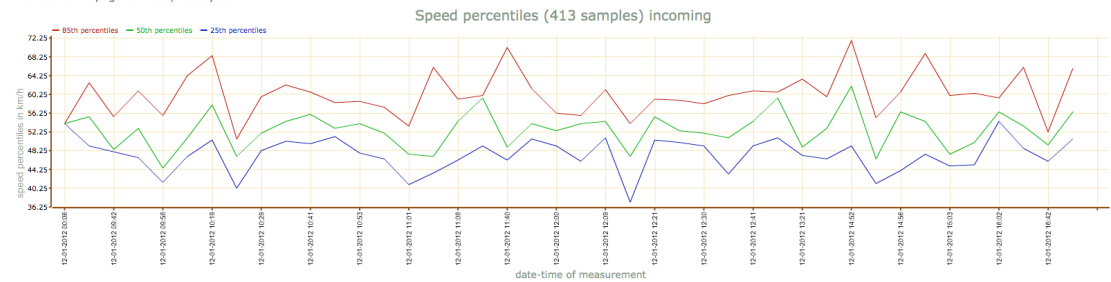
Total samples: 16-12-2010 22:27 - 18-01-2012 19:23, 11503

- Speed values
- Vehicle count
- Average & maximum
- Speed percentiles
- Frequency evaluation
- Histogram
- Classification
- Export to Excel
- Setup & admin

The percentile is the value of a variable below which a certain percent of observations fall. For example, the 85th percentile is the value (or score) below which 85 percent of the observations may be found. The term percentile and the related term percentile rank are often used in the reporting of scores from norm-referenced tests.

Speed percentiles

This is a Demo page of InfoSpeed System.



Start of evaluation: , End of evaluation:

per 100 samples per 10 samples

Total samples: 16-12-2010 22:27 - 18-01-2012 19:23, 11503

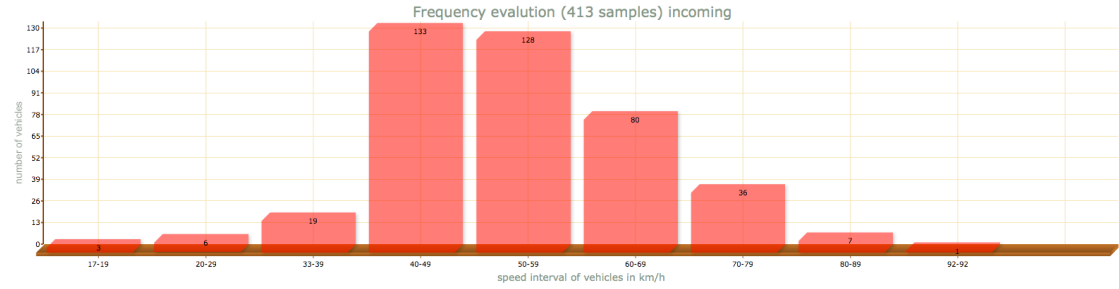


- Speed values
- Vehicle count
- Average & maximum
- Speed percentiles
- Frequency evaluation
- Histogram
- Classification
- Export to Excel
- Setup & admin

It shows the number of vehicles in preset speed interval

Frequency evaluation

This is a Demo page of InfoSpeed System.



Start of evaluation: 12:01:2012, End of evaluation: 12:23:2012

speed steps: 10 km/h Go Print

PIE format

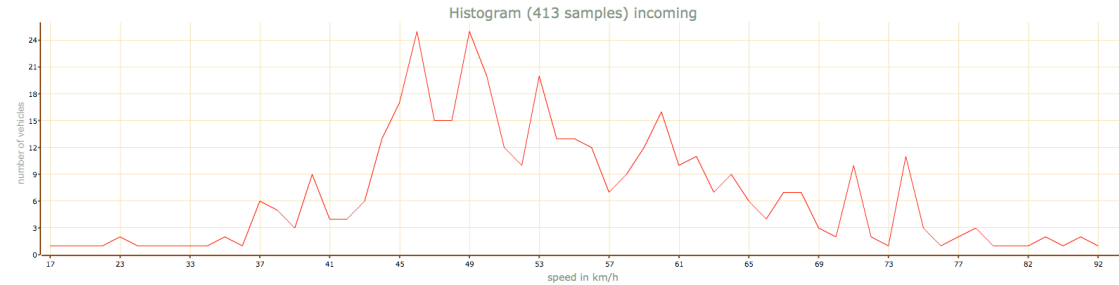
Total samples: 16-12-2010 22:27 - 18-01-2012 19:23, 11503

- Speed values
- Vehicle count
- Average & maximum
- Speed percentiles
- Frequency evaluation
- Histogram
- Classification
- Export to Excel
- Setup & admin

Histogram is a graphical representation, showing a visual impression of the distribution of data.

Histogram

This is a Demo page of InfoSpeed System.



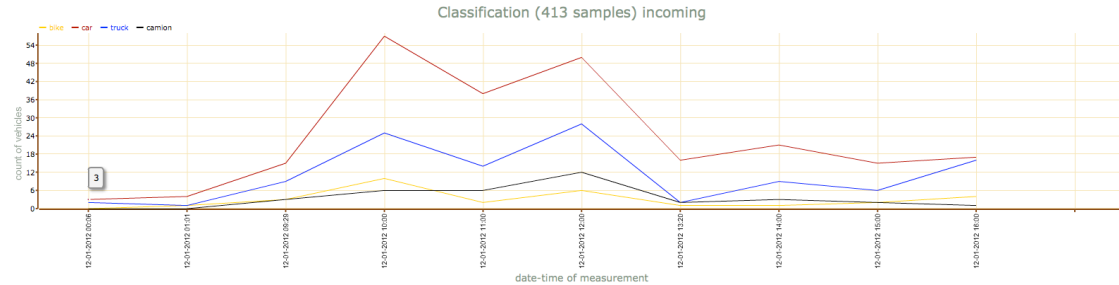
Start of evaluation: 12:01:2012, End of evaluation: 12:23:2012 Go Print

Total samples: 16-12-2010 22:27 - 18-01-2012 19:23, 11503

- Speed values
- Vehicle count
- Average & maximum
- Speed percentiles
- Frequency evaluation
- Histogram
- Classification
- Export to Excel
- Setup & admin
- Classification help

Classification

This is a Demo page of InfoSpeed System.



Start of evaluation: 12:01:2012, End of evaluation: 12:23:2012

time interval: 60 minutes Go Print

Total samples: 16-12-2010 22:27 - 18-01-2012 19:23, 11503

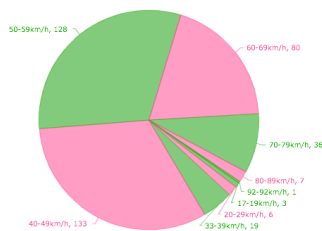
- Speed values
- Vehicle count
- Average & maximum
- Speed percentiles
- Frequency evaluation
- Histogram
- Classification
- Export to Excel
- Setup & admin

It shows the number of vehicles in preset speed interval

Frequency evaluation

This is a Demo page of InfoSpeed System.

Frequency evaluation (413 samples) incoming



Start of evaluation: 12:01:2012, End of evaluation: 12:23:2012

speed steps: 10 km/h Go Print

PIE format

Total samples: 16-12-2010 22:27 - 18-01-2012 19:23, 11503